

# Double / Three Level Terminal Blocks



This section consists of double-level (DRTP2.5/4, DRTP4-Series) and three-level (TRTP4) terminal blocks.

Raad double level terminal blocks enjoy the space-saving advantage. It is remarkable in DRTP4 that due to its double wiring density, the upper level is offset laterally by half of the terminal block width and the following advantages are met:

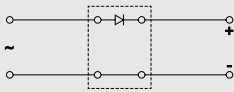
- Accessibility of the lower level screw is more effective with a screw driver and,

- Lower labels and entry points can be viewed better

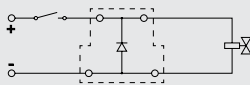
The end plates, EP1, EP2, EP3 compensates the level offset at the beginning and the end of the terminal strips, therefore standard terminal blocks can be directly aligned.

As for foot connection, they can be mounted on TH 35 mounting rail.

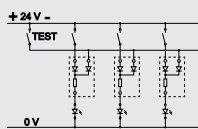
- Terminal block type DRTP4-L, DRTP2.5/4-L has four accessible input/output connecting ports by an internally link between two upper and lower levels. These terminals can be used as distribute terminals same as one to three or one to two branches, in the equipotential circuits, They can also be connected to adjacent terminals, through cross-connection in the lower level.



Example for rectifying purposes

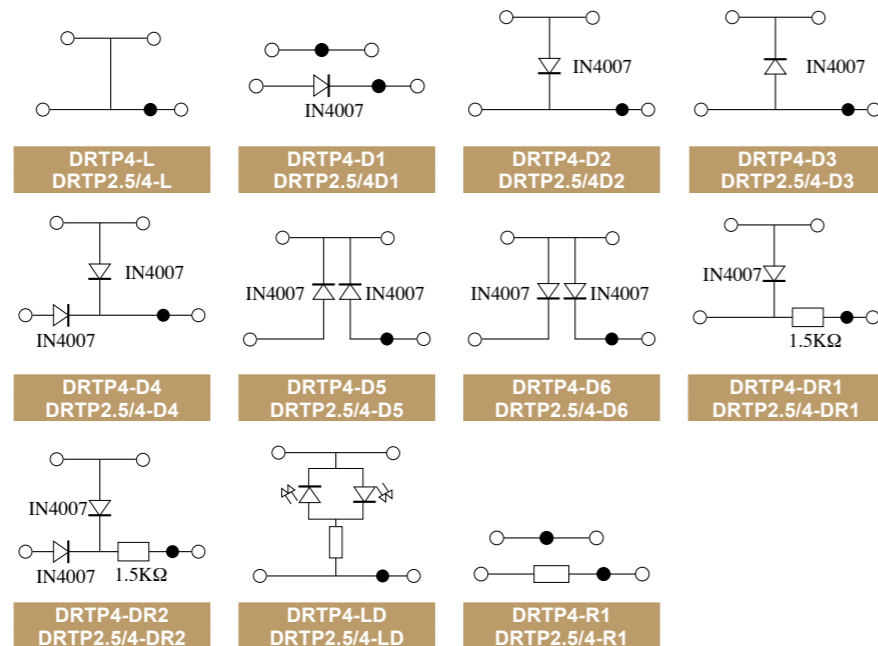


Example for fine switching a DC load

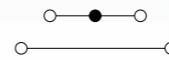


Example for lamp test circuit

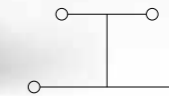
- In designing DRTP2.5/4, DRTP4, special capabilities are offered for installing electronic elements. Raad double level terminal blocks are used for voltage rectifying, monitoring, electronic elements, fine switching, and test circuits. Furthermore, a number of circuits, in which the terminals are applied, are offered (for details see diagrams as follows). Any other type of circuit is offered on request.
- The coloured options can be requested. Raad three-level terminal block was specially developed for space-saving wiring in 3 wired elements such as motors and sensors, e.g. phase-neutral-earth connection or positive-negative-earth / shield connection. Some of the circuits designed by using small components in the Raad double level terminal blocks (DRTP2.5/4, DRTP4) given as below:



**DRTP2.5/4**  
width 6 mm  
KEMA CE



**DRTP2.5/4-L**  
width 6 mm

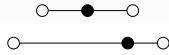


IEC 60947-7-1 rated data		DRTP2.5/4			DRTP2.5/4-L		
Voltage(V)/Impulse voltage (kV)		500 / 6			500 / 6		
Pollution degree/Voltage category/Material group		3/III/1			3/III/1		
Current (A)		32			32		
Cross - section (mm <sup>2</sup> )		4			4		
Description	Type	Ordering No.	Qty.	Type	Ordering No.	Qty.	
Terminal block, for mounting on TH 35-7.5, 15	DRTP2.5/4	101340	50	DRTP2.5/4-L	101350	50	
End plate width (mm)	EP-DRTP2.5/4 1.2	201297	20	EP-DRTP2.5/4 1.2	201297	20	
End bracket, for TH 35- 7.5, 15 width (mm) Raad recommended	EB/3 10	200108	50	EB/3 10	200108	50	
End bracket, for G 32 TH 35- 7.5, 15 width (mm) Raad recommended	EB/2 10	200103	50	EB/2 10	200103	50	
Partition width (mm)	GP 3	201103	20	-	-	-	
Cross-connection	CC10-2.5 10-pos CC3-2.5 3-pos CC2-2.5 2-pos	201020 201021 201022	10 50 50	-	-	-	
Test socket	TS3/6/2.3	200540	50	-	-	-	
Marking Tags	NS6	For details see Accessories		NS6	For details see Accessories		
Screw driver	0.5x3	500042	-	0.5x3	500042	-	

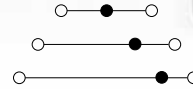
Dimensions (mm)		
Width/Length	6/57.4	6/57.4
Height, G32/TH 35-7.5/TH 35-15	-/56.9/64.4	-/56.9/64.4
Connection capacity		
Rigid Solid (mm <sup>2</sup> )	0.5-4	0.5-4
Rigid stranded (mm <sup>2</sup> )	0.5-4	0.5-4
Flexible (mm <sup>2</sup> )	0.5-4	0.5-4
American Wire Gauge (AWG)	20-12	20-12
IEC test gauge		
Stripping length (mm)	9	9
Clamping screw		
Tightening torque (N.m)	0.4	0.4
Insulation material		
	PA 6.6	PA 6.6

**DRTP4**

width 6.4 mm

**TRTP4**

width 6.4 mm



IEC 60947-7-1 rated data		DRTP4			TRTP4		
Voltage(V)/Impulse voltage (kV)		500 / 6			400 / 6		
Pollution degree/Voltage category/Material group		3/III/I			3/III/I		
Current (A)		32			32		
Cross - section (mm <sup>2</sup> )		4			4		
Description	Type	Ordering No.	Qty.	Type	Ordering No.	Qty.	
Terminal block, for mounting on TH-35-7.5, 15	DRTP4	101302	50	TRTP4	101332	50	
End plate 1 width (mm)	EP1-DRTP4 1.5	201302	20	-	-	-	
End plate 2 width (mm)	EP2-DRTP4 1.5	201303	20	-	-	-	
End plate 3 width (mm)	EP3-DRTP4 2.5	201304	20	-	-	-	
Partition width (mm)	P-DRTP4 2.5	200302	20	-	-	-	
Partition width (mm)	-	-	-	GP 3	201103	20	
Small partition no loss of pitch	SP-D4 0.9	201105	100	-	-	-	
End bracket, for G 32 TH 35- 7.5, 15 width (mm) Raad recommended	EB/2 10	200103	50	EB/2 10	200103	50	
Cross-connection	CC10-D4 10-pos.	201310	10	CC10-D4 10-pos.	201310	10	
	CC3-D4 3-pos.	201311	50	CC3-D4 3-pos.	201311	50	
	CC2-D4 2-pos.	201312	50	CC2-D4 2-pos.	201312	50	
max. current (A)	32			32			
Bridge-comb	BC10-D4 10-pos.	201413	10	BC10-D4 10-pos.	201413	10	
	BC3-D4 3-pos.	201412	50	BC3-D4 3-pos.	201412	50	
	BC2-D4 2-pos.	201411	50	BC2-D4 2-pos.	201411	50	
max. current (A)	32			32			
Test socket	TS3/6/2.3	200540	50	TS3/6/2.3	200540	50	
Marking Tags	NS6.4	For details see Accessories		NS6.4	For details see Accessories		
Screw driver	0.5x3	500042	-	0.5x3	500042	-	

Dimensions (mm)	
Width/Length	6.4 / 68.4
Height, G32/TH 35-7.5/TH 35-15	71.5 / 67.5 / 75
Connection capacity	
Rigid Solid (mm <sup>2</sup> )	0.5-4
Rigid stranded (mm <sup>2</sup> )	0.5-4
Flexible (mm <sup>2</sup> )	0.5-4
American Wire Gauge (AWG)	20-12
IEC test gauge	
Stripping length (mm)	9
Clamping screw	
Tightening torque (N.m)	0.4
Insulation material	
	PA 6.6